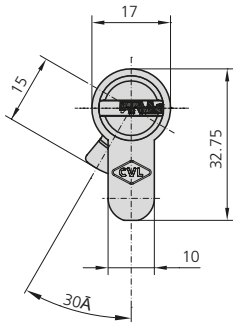


SECURITY EUROPEAN PROFILE CYLINDER

J6 -601L RANGE LONG CAM



CHARACTERISTIC

- Europrofile cylinder with flat key and 6 pins
- Cylinder body and rotor in brass
- Pin, counterpins and springs in stainless steel
- Anti drill pins in both sides of the body
- Anti-picking protection
- Certified in compliance to the norm UNE-EN1303:2016
- Durability: 100.000 cycles
- Classification:

1 6 0 B 0 C 5 0/D*

D*: Drilling and mechanical attacking resistance with KES4100 escutcheon

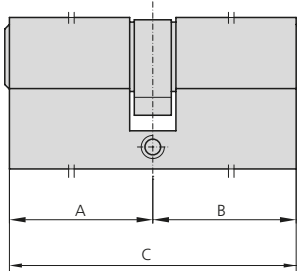
- 15 mm long cam
- Brass and nickel matt finishings available
- 5 keys
- Dimensions from 40 to 160mm

OPTIONAL ACCESSORIES

- Emergency exit function (see page 128-129)

DESCRIPTION	REF.	MEASUREMENTS			FINISH	UNITS
		A	B	C		

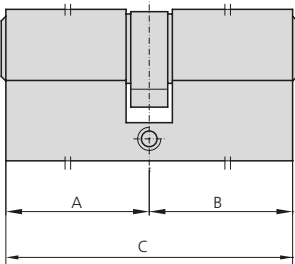
- Double cylinder



601L3030/3	31	31	62	LP	1
601L3030/4M	31	31	62	NM	1
601L3035/3	31	36	67	LP	1
601L3035/4M	31	36	67	NM	1
601L3040/3	31	41	72	LP	1
601L3040/4M	31	41	72	NM	1
601L3535/3	36	36	72	LP	1
601L3535/4M	36	36	72	NM	1
601L3045/3	31	46	77	LP	1
601L3045/4M	31	46	77	NM	1
601L3540/3	36	41	77	LP	1
601L3540/4M	36	41	77	NM	1
601L3050/3	31	51	82	LP	1
601L3050/4M	31	51	82	NM	1
601L3545/3	36	46	82	LP	1
601L3545/4M	36	46	82	NM	1
601L4040/3	41	41	82	LP	1
601L4040/4M	41	41	82	NM	1
601L3055/3	31	56	87	LP	1
601L3055/4M	31	56	87	NM	1
601L4045/3	41	46	87	LP	1
601L4045/4M	41	46	87	NM	1
601L3550/3	36	51	87	LP	1
601L3550/4M	36	51	87	NM	1
601L3060/3	31	61	92	LP	1
601L3060/4M	31	61	92	NM	1
601L3555/3	36	56	92	LP	1
601L3555/4M	36	56	92	NM	1
601L4050/3	41	51	92	LP	1
601L4050/4M	41	51	92	NM	1

SECURITY EUROPEAN PROFILE CYLINDER

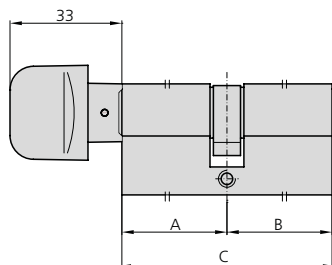
J6 -601L RANGE LONG CAM

DESCRIPTION	REF.	MEASUREMENTS			FINISH	UNITS
		A	B	C		
	601L4545/3	46	46	92	LP	1
	601L4545/4M	46	46	92	NM	1
	601L3065/3	31	66	97	LP	1
	601L3065/4M	31	66	97	NM	1
	601L3560/3	36	61	97	LP	1
	601L3560/4M	36	61	97	NM	1
	601L4550/3	46	51	97	LP	1
	601L4550/4M	46	51	97	NM	1
	601L3070/3	31	71	102	LP	1
	601L3070/4M	31	71	102	NM	1
	601L3565/3	36	66	102	LP	1
	601L3565/4M	36	66	102	NM	1
	601L4060/3	41	61	102	LP	1
	601L4060/4M	41	61	102	NM	1
	601L4555/3	46	56	102	LP	1
	601L4555/4M	46	56	102	NM	1
	601L5050/3	51	51	102	LP	1
	601L5050/4M	51	51	102	NM	1
	601L4560/3	46	61	107	LP	1
	601L4560/4M	46	61	107	NM	1
	601L3080/3	31	81	112	LP	1
	601L3080/4M	31	81	112	NM	1
	601L4070/3	41	71	112	LP	1
	601L4070/4M	41	71	112	NM	1
	601L5060/3	51	61	112	LP	1
	601L5060/4M	51	61	112	NM	1
	601L5555/3	56	56	112	LP	1
	601L5555/4M	56	56	112	NM	1
	601L5065/3	51	66	117	LP	1
	601L5065/4M	51	66	117	NM	1
	601L3090/3	31	91	122	LP	1
	601L3090/4M	31	91	122	NM	1
	601L6060/3	61	61	122	LP	1
	601L6060/4M	61	61	122	NM	1
	601L30100/3	31	101	132	LP	1
	601L30100/4M	31	101	132	NM	1
	601L7070/3	71	71	142	LP	1
	601L7070/4M	71	71	142	NM	1
	601L7575/3	76	76	152	LP	1
	601L7575/4M	76	76	152	NM	1
	601L8080/3	81	81	162	LP	1
	601L8080/4M	81	81	162	NM	1

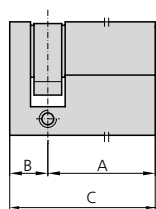
SECURITY EUROPEAN PROFILE CYLINDER

J6 -601LPM RANGE LONG CAM

DESCRIPTION	REF.	MEASUREMENTS			FINISH	UNITS
		A	B	C		
• Cylinder with knob	601LPM3030/3	31	31	62	LP	1
	601LPM3030/4M	31	31	62	NM	1
	601LPM3040/3	31	41	72	LP	1
	601LPM3040/4M	31	41	72	NM	1
	601LPM4030/3	41	31	72	LP	1
	601LPM4030/4M	41	31	72	NM	1
	601LPM3535/3	36	36	72	LP	1
	601LPM3535/4M	36	36	72	NM	1
	601LPM3050/3	31	51	82	LP	1
	601LPM3050/4M	31	51	82	NM	1
	601LPM4040/3	41	41	82	LP	1
	601LPM4040/4M	41	41	82	NM	1
	601LPM3060/3	31	61	92	LP	1
	601LPM3060/4M	31	61	92	NM	1
	601LPM4050/3	41	51	92	LP	1
	601LPM4050/4M	41	51	92	NM	1
	601LPM4060/3	41	61	102	LP	1
	601LPM4060/4M	41	61	102	NM	1
	601LPM4070/3	41	71	112	LP	1
	601LPM4070/4M	41	71	112	NM	1



• Single cylinder



601L3010/3	31	11	42	LP	1
601L3010/4M	31	11	42	NM	1
601L4010/3	41	11	52	LP	1
601L4010/4M	41	11	52	NM	1
601L5010/3	51	11	62	LP	1
601L5010/4M	51	11	62	NM	1
601L6010/3	61	11	72	LP	1
601L6010/4M	61	11	72	NM	1