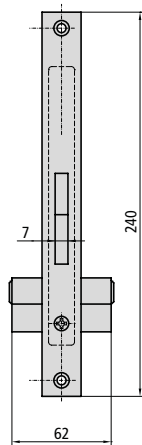


SLIDING DOORS

HOOK DEAD BOLT WITH EUROPEAN PROFILE CYLINDER

198K RANGE *slide & lock*



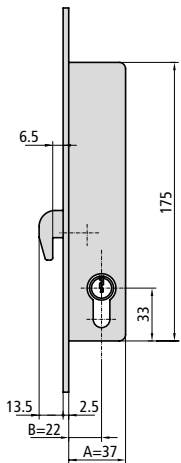
CHARACTERISTIC

- Lock for sliding doors
- Closing by 1 dead bolts
- 16mm or 22mm SS front plate
- 15 mm box
- Cylinder set screw
- 2 nylon escutcheons ref. ES1984

OPTIONAL ACCESSORIES

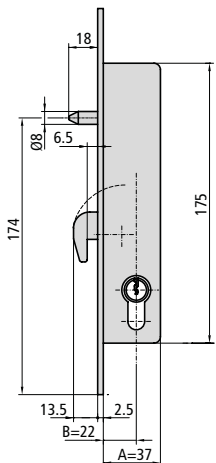
- Complete range of cylinders
- Customized study of strike plates

DESCRIPTION	REF.	MEASUREMENTS CAM			FINISH		UNITS	
		B	A		FRONT PLATE	CYLINDER		



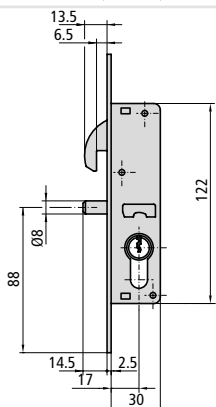
- Long cam cylinder 101L3030/4

	P198K25/6	22	37	15	Al	CN	1	20
	P198K30/6	27	42	15	Al	CN	1	20
	P198K35/6	32	47	15	Al	CN	1	20
	198K25/6	22	37	15	Al	CN	1	20
	198K30/6	27	42	15	Al	CN	1	20
	198K35/6	32	47	15	Al	CN	1	20



- Security bolt
- Long cam cylinder 101L3030/4

	P198KB25/6	22	37	15	Al	CN	1	20
	P198KB30/6	27	42	15	Al	CN	1	20
	P198KB35/6	32	47	15	Al	CN	1	20
	198KB25/6	22	37	15	Al	CN	1	20
	198KB30/6	27	42	15	Al	CN	1	20
	198KB35/6	32	47	15	Al	CN	1	20



- Sliding security bolt
- Short cam cylinder 101C3030/4

	P198KD20/6	17	30	13,25	Al	CN	1	20
	198KD20/6	17	30	13,25	Al	CN	1	20