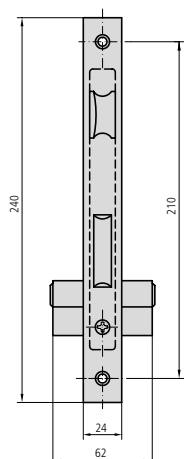


LOCK WITH SLIDING DEAD BOLT

1970N RANGE



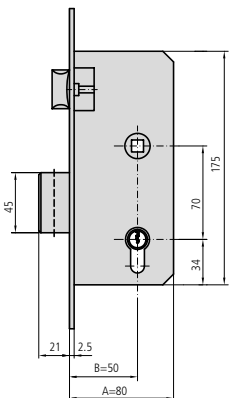
CHARACTERISTIC

- 70 mm between axes
- Brass plated iron or stainless steel front plate
- Reversible latch bolt operated by key and handle
- Two turn dead bolt operated by key
- Strike plate for given locks
- Escutcheon ES1960
- Fastening components
- European profile cylinder

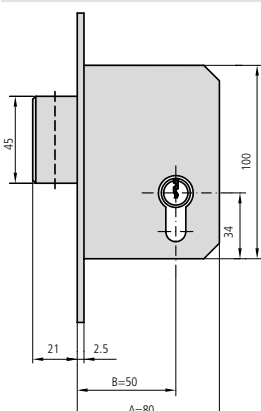
OPTIONAL ACCESSORIES

- Complete range of cylinders

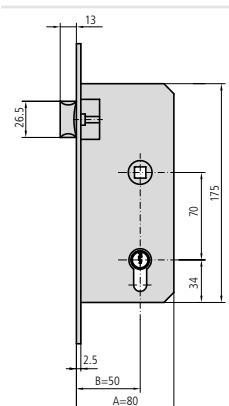
DESCRIPTION	REF.	MEASUREMENTS		CAM	FINISH	CANTO	UNITS	
		B	A				FRONT PLATE	CYLINDER



<ul style="list-style-type: none"> • Lock with latch bolt and dead bolt • Long cam cylinder 101L3030 • Strike plate CE1985/2 or CE1985/6 	1970N/40/2	40	68	15	HL	CL	1	12
	1970N/40/6	40	68	15	AI	CN	1	12
	1970N/50/2	50	78	15	HL	CL	1	12
	1970N/50/6	50	78	15	AI	CN	1	12
	1970N/60/2	60	88	15	HL	CL	1	12
	1970N/60/6	60	88	15	AI	CN	1	12



<ul style="list-style-type: none"> • Lock with dead bolt only • Long cam cylinder 101L3030 • Strike plate CE1970A/2 or CE1970A/6 	1970NA40/2	40	68	15	HL	CL	1	20
	1970NA40/6	40	68	15	AI	CN	1	20
	1970NA50/2	50	78	15	HL	CL	1	20
	1970NA50/6	50	78	15	AI	CN	1	20
	1970NA60/2	60	88	15	HL	CL	1	20
	1970NA60/6	60	88	15	AI	CN	1	20

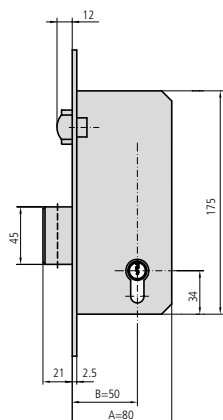


<ul style="list-style-type: none"> • Lock with latch bolt only • Single cylinder 101L3010 • Strike plate CE1970R/2 or CE1970R/6 	1970NT40/2	40	68	15	HL	CL	1	12
	1970NT40/6	40	68	15	AI	CN	1	12
	1970NT50/2	50	78	15	HL	CL	1	12
	1970NT50/6	50	78	15	AI	CN	1	12
	1970NT60/2	60	88	15	HL	CL	1	12
	1970NT60/6	60	88	15	AI	CN	1	12

LOCK WITH SLIDING DEAD BOLT

1970N RANGE

DESCRIPTION	REF.	MEASUREMENTS		CAM	FINISH	CANTO	UNITS	
		B	A				FRONT PLATE	CYLINDER



- Lock with roller and dead bolt
- Long cam cylinder 101L3030
- Strike plate CE1985/2 or CE1985/6

1970NV40/6	40	68	15	Al	CN	1	12
1970NV50/6	50	78	15	Al	CN	1	12
1970NV60/6	60	88	15	Al	CN	1	12