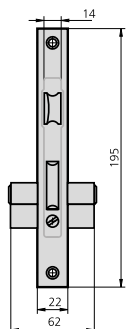


LOCK WITH SLIDING DEAD BOLT

1960 RANGE



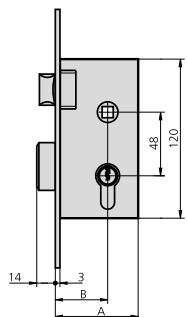
CHARACTERISTIC

- 48 mm between axes
- Brass plated iron or stainless steel front plate
- Reversible latch bolt operated by key and handle
- One turn dead bolt operated by key
- Strike plate for given locks
- Escutcheon ES1960
- Fastening components
- European profile cylinder

OPTIONAL ACCESSORIES

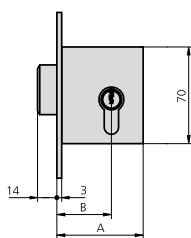
- Complete range of cylinders
- Kit knob adapter

DESCRIPTION	REF.	MEASUREMENTS		CAM	FINISH	CANTO	UNITS	
		B	A				FRONT PLATE	CYLINDER



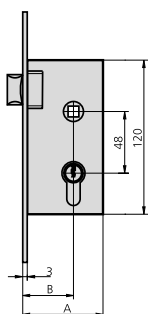
- Lock with latch bolt and dead bolt
- Long cam cylinder 101L3030
- Strike plate CE1960/2 or CE1960/6

1960/60/2	40	62	15	HL	CL	1	20
1960/60/6	40	62	15	AI	CN	1	20
1960/70/2	50	72	15	HL	CL	1	20
1960/70/6	50	72	15	AI	CN	1	20



- Lock with dead bolt only
- Long cam cylinder 101L3030
- Strike plate CE1960A/2 or CE1960A/6

1960A60/2	40	62	15	HL	CL	1	30
1960A60/6	40	62	15	AI	CN	1	30
1960A70/2	50	72	15	HL	CL	1	30
1960A70/6	50	72	15	AI	CN	1	30



- Lock with latch bolt only
- Single cylinder 101L3010
- Strike plate CE249R/2 or CE249R/6

1960T60/2	40	62	15	HL	CL	1	20
1960T60/6	40	62	15	AI	CN	1	20
1960T70/2	50	72	15	HL	CL	1	20
1960T70/6	50	72	15	AI	CN	1	20