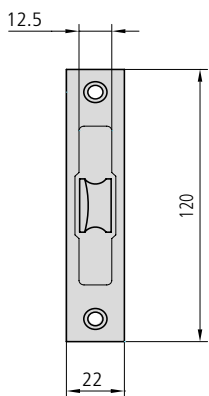


## LATCH BOLTS

## SERIE 249

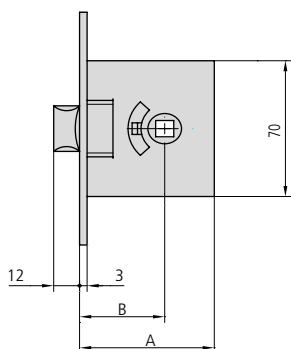


### CHARACTERISTICS

- Brass plated iron front plate
- Reversible latch bolt operated by handle
- Strike plate for given locks
- Fastening components

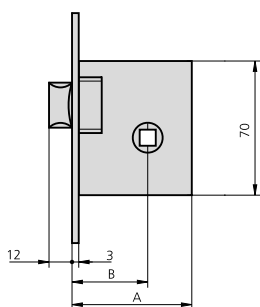
### OPTIONAL ACCESSORIES

DESCRIPTION	REF.	MEASUREMENTS		FINISH		UNITS	
		B	A	FRONT PLATE	CYLINDER		



- Reversible lock
- Latch bolt operated by handle
- Strike plate CE249R/2

249B50/2	37	52	HL		1	20
249B60/2	44	62	HL		1	20
249B70/2	50	72	HL		1	20



- Reversible latch bolt a operated by handle
- Strike plate CE249R/2

249R50/2	30	52	HL		1	30
249R60/2	40	62	HL		1	30
249R70/2	50	72	HL		1	30