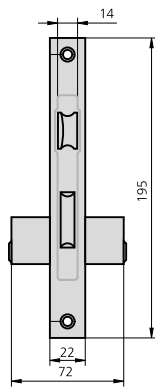


LOCK WITH SLIDING DEAD BOLT

SERIE 1961



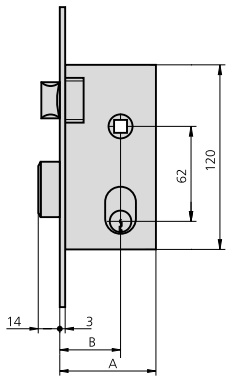
CHARACTERISTICS

- Brass plated iron front plate
- Reversible latch bolt operated by key and handle
- Dead bolt operated by key
- Strike plate for given locks
- Escutcheon ES1964
- Fastening components

OPTIONAL ACCESSORIES

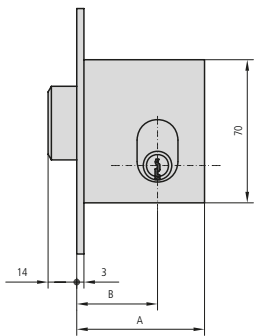
- Complete range of cylinders

DESCRIPTION	REF.	MEASUREMENTS		CAM		FINISH		UNITS	
		B	A	FRONT PLATE	CYLINDER				



- Lock with latch bolt and dead bolt
- Strike plate CE1960/2
- Oval cylinder 6961/2525/3

1961/60/2	40	62	HL	CL	1	20
1961/70/2	50	72	HL	CL	1	20



- Lock with dead bolt only
- Strike plate CE1960A/2
- Oval cylinder 6961/2525/3

1961A60/2	40	62	HL	CL	1	20
1961A70/2	50	72	HL	CL	1	20