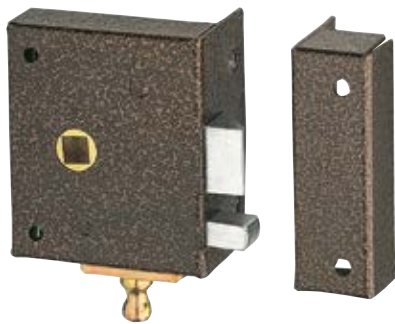


# LATCH BOLTS

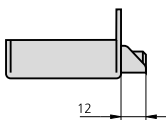
## SERIE 236



### CHARACTERISTICS

- Rim door lock reversible latch bolt
- Dead bolt operated by pull handle
- Square ruler for 8 mm handle
- Finished in painted iron
- Strike plate CE236/1
- Escutcheon ES234

### OPTIONAL ACCESSORIES



### DESCRIPTION

### REF.

### MEASUREMENTS

### CYLINDER

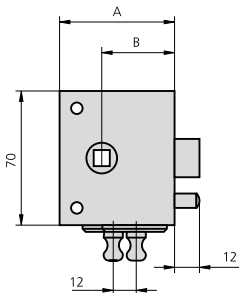
### FINISH

### UNITS

#### B

#### A

#### FRONT PLATE CYLINDER



236/50/1	30	50	-	HE	6	120
236/60/1	38	60	-	HE	6	120
236/70/1	46	70	-	HE	6	120