

LATCH BOLTS

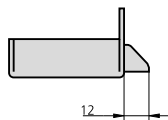
SERIE 234



CHARACTERISTICS

- Rim door reversible latch bolt
- Latch bolt operated by handle
- Square ruler for 8 mm handle
- Finished in painted iron
- Strike plate CE234/1
- Escutcheon ES234

OPTIONAL ACCESSORIES



DESCRIPTION

REF.

MEASUREMENTS

B

A

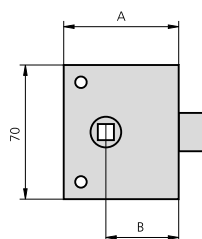
CYLINDER

FINISH

FRONT PLATE

CYLINDER

UNITS



234/50/1

30

50

-

HE

6

120

234/60/1

38

60

-

HE

6

120

234/70/1

46

70

-

HE

6

120