

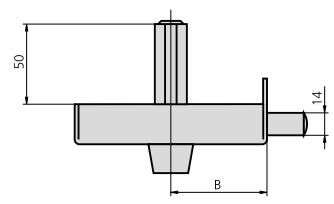
RIM DOOR LOCK 124 SERIES
SERIE 124A

CHARACTERISTICS

- Two turn dead bolt operated by key from both sides
- One turn dead bolt operated by key from both sides
- Two finishes: painted iron and nickel plated iron
- Strike plate for given locks
- Escutcheon for different cylinder types
- Fastening components

OPTIONAL ACCESSORIES

- Security european profile cylinder



DESCRIPTION	REF.	MEASUREMENTS		CYLINDER	FINISH		UNITS	
		B	A		FRONT PLATE	CYLINDER		
<ul style="list-style-type: none"> • Profile cylinder ref. 5056/50/3 • Strike plate ref. CE125AD or CE125AI • Escutcheon ES125 	124A8D/0	47	90	5056/50/3	HN	CL	1	24
	124A8I/0	47	90	5056/50/3	HN	CL	1	24
	124A8D/1	47	90	5056/50/3	HE	CL	1	24
	124A8I/1	47	90	5056/50/3	HE	CL	1	24
	124A10D/0	60	100	5056/50/3	HN	CL	1	24
	124A10I/0	60	100	5056/50/3	HN	CL	1	24
	124A10D/1	60	100	5056/50/3	HE	CL	1	24
	124A10I/1	60	100	5056/50/3	HE	CL	1	24
	124A12D/0	60	120	5056/50/3	HN	CL	1	24
	124A12I/0	60	120	5056/50/3	HN	CL	1	24
	124A12D/1	60	120	5056/50/3	HE	CL	1	24
	124A12I/1	60	120	5056/50/3	HE	CL	1	24
	124A14D/0	70	140	5056/50/3	HN	CL	1	24
	124A14I/0	70	140	5056/50/3	HN	CL	1	24
124A14D/1	70	140	5056/50/3	HE	CL	1	24	
124A14I/1	70	140	5056/50/3	HE	CL	1	24	
<ul style="list-style-type: none"> • Round cylinder ref. 5156/50/3 • Strike plate ref. CE125AD or CE125AI • Escutcheon ES1125 	1124A8D/0	47	90	5156/50/3	HN	CL	1	24
	1124A8I/0	47	90	5156/50/3	HN	CL	1	24
	1124A8D/1	47	90	5156/50/3	HE	CL	1	24
	1124A8I/1	47	90	5156/50/3	HE	CL	1	24
	1124A10D/0	60	100	5156/50/3	HN	CL	1	24
	1124A10I/0	60	100	5156/50/3	HN	CL	1	24
	1124A10D/1	60	100	5156/50/3	HE	CL	1	24
	1124A10I/1	60	100	5156/50/3	HE	CL	1	24
	1124A12D/0	60	120	5156/50/3	HN	CL	1	24
	1124A12I/0	60	120	5156/50/3	HN	CL	1	24
	1124A12D/1	60	120	5156/50/3	HE	CL	1	24
	1124A12I/1	60	120	5156/50/3	HE	CL	1	24
	1124A14D/0	70	140	5156/50/3	HN	CL	1	24
	1124A14I/0	70	140	5156/50/3	HN	CL	1	24
1124A14D/1	70	140	5156/50/3	HE	CL	1	24	
1124A14I/1	70	140	5156/50/3	HE	CL	1	24	

